

Instructions – Thank you for purchasing this Live Monarch Butterfly Life Cycle Kit by Swallowtail Farms. This kit contains 2 live monarch pupae which need to be removed from the packaging as soon as possible. But first, please take a moment to read through this entire instruction sheet so that your experience with the monarch butterfly will be as rewarding as possible.

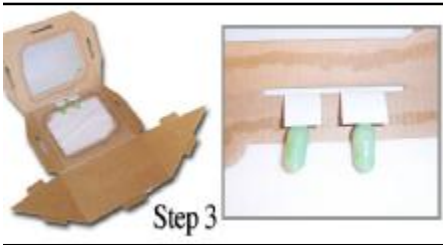
Hanging the Two Monarch Pupae in the Viewing Box



Step 1 – Clear out the packing materials and remove the items (CD-ROM, milkweed seeds, life cycle poster, & viewing box) from the top portion of the package (refill kit only has the 2 pupae). Then, lift and remove the white Styrofoam lid for access to the lower cooled portion of the box interior.



Step 2 – Locate the small brown rectangular box containing the 2 monarch pupae. The box has 3 air holes on one side and two on the other. Open from the side which has 2 air holes. Upon opening, lift the gray pad. Then, remove each pupa by lifting up on the white paper tab. Each pupa is glued to this tab. If the pupa has become unattached from the paper, you may reapply using a drop of hot glue.



Step 3 – Lay the viewing box flat open on a table with the inside (or non-printed side) of the box facing up. Take the pupae strips, one at a time, and insert the portion of the white paper tab that says “Insert And Fold Here” through the long-narrow slot between the 2 screens. Crease the tab at the line and securely tape it to the outside of the box.

Step 4 – To assemble the viewing box, first crease along the score marks and tabs. Then, fold the main part of the box with the two screens to make an “A” shape (like a camping tent). Insert the center tab securing the main portion of the box. Close the box by folding the sides and inserting the tabs



Step 5 – Store indoors at room temperature and keep out of direct sunlight. Allow 2 to 10 days for the monarch butterfly to emerge. The day prior to emergence, the pupae will start to turn dark. Once the orange and black colors of the wings become visible inside the chrysalis, it will be a very short time before the butterfly emerges. **Caution – the newly emerged butterfly has very delicate wings. Do not move the box until 4 hours after the butterfly has emerged. If the butterfly falls from its shell, you may reach in and let it climb up on your finger, then let it climb on to the inside of the screen to finish hanging.** The butterfly will need to be released within 48 hours in order to survive in the wild. If you desire to keep for a longer period, you will need to build a larger cage and feed the butterflies daily with either fresh slices of watermelon or Gatorade juice.

Using the CD-ROM

Step 1 – Open the CD-ROM drive on your computer and insert the disk. In most systems, the disk will automatically load. The main menu will shortly appear after the disk loads. Select the desired option from the main menu. Full instructions are available in a printable PDF file from the main menu. If you do not have a PDF reader, click on “Install Adobe Acrobat Reader” from the main menu. **System requirements:** Windows 98 or above, Pentium II processor or higher, CD-ROM drive, at least 64 MB RAM, Internet Explorer 5.5 or above.

The Life Cycle Poster & Fact Guide

On one side is a visual representation with a description of each of the life stages of the monarch butterfly. This side also includes various facts and trivia knowledge about the monarch butterfly. The other side shows an artistic display of the monarch and some of the different stages of the monarch life cycle. This poster can be pinned up on a wall or bulletin board for further enjoyment.

Milkweed Seeds

Included in this kit is 1 gram of milkweed seeds (*Asclepias speciosa*), which is the host plant for the monarch caterpillar. Commonly called “showy milkweed,” this plant is a perennial growing 24-40 inches tall with large pink clusters of flowers appearing from June to August. The opposing leaves grow to 8 inches long with 3.5-4.5 inch long seed pods covered with white hairs. This plant is rhizomatous and may be aggressive.

Planting milkweed is the one definite way to attract monarch butterflies to your garden. Monarch butterflies are constantly on the search for milkweed with the sole purpose of providing a food source for their offspring. We encourage the planting of milkweed whenever possible to provide habit for the monarch, especially in urban and suburban areas where habit is regularly vanishing. To sow, simply place the seeds in approximately 1/8” to 1/4” soil and water regularly (not allowing the soil to completely dry out) until germination. When the seedling has emerged, simply water as necessary. Once established, this hardy perennial will survive on its own coming back year after year.

For Further Study

The Monarch Butterfly is one of the most studied butterflies in the world. This large North American flyer travels south every fall taking part in a massive butterfly migration. In 1999, Swallowtail Farms, Inc. participated in a unique study to help broaden the general understanding of the monarch migration. To learn more about this study, go to: www.swallowtailfarms.com/pages/educationalproducts_mms.html

The following Internet search terms will also lead to many interesting websites about monarch butterflies:

“monarch butterfly migration”

“monarch butterfly milkweed”

“monarch butterfly life cycle”

Our Guarantee and Return Policy

We are confident that you will be satisfied with this Live Monarch Butterfly Life Cycle Kit. However, it should be noted that there is about a 1-2% natural casualty rate, so it is possible that one pupa may not survive to emerge as a normal and healthy butterfly. Although we would prefer that 100% of our butterflies survive, it is simply natural that not all will. With this in mind, we do guarantee that **at least** one of the 2 pupae will emerge as a healthy monarch butterfly. If it does not, please email us so that we can ship a replacement to you. Replacement requests must be made within 30 days of receipt of product. It is not required to return the dead pupa, however you may be asked to email a digital photo of the defective chrysalis or butterfly.

